



G3 Quickmanual

iDTRONIC GmbH
Ludwig-Reichling-Straße 4
67059 Ludwigshafen
Germany/Deutschland

Phone: +49 621 6690094-0
Fax: +49 621 6690094-9
E-Mail: info@idtronic.de
Web: idtronic.de

Issue 1.0
– 14. July 2020 –

Subject to alteration without prior notice.
© Copyright iDTRONIC GmbH 2018
Printed in Germany

1 Package



G3



Battery



Adapter / AC Cord



Handstrap



Stylus Pen, String, Quick Manual



Rotating Handstrap (optional)



Desktop Cradle (optional)



Vehicle Cradle (optional)

Note

Items in the box may be changed according to the purchase order.

2 Device Features



3 Card Installation



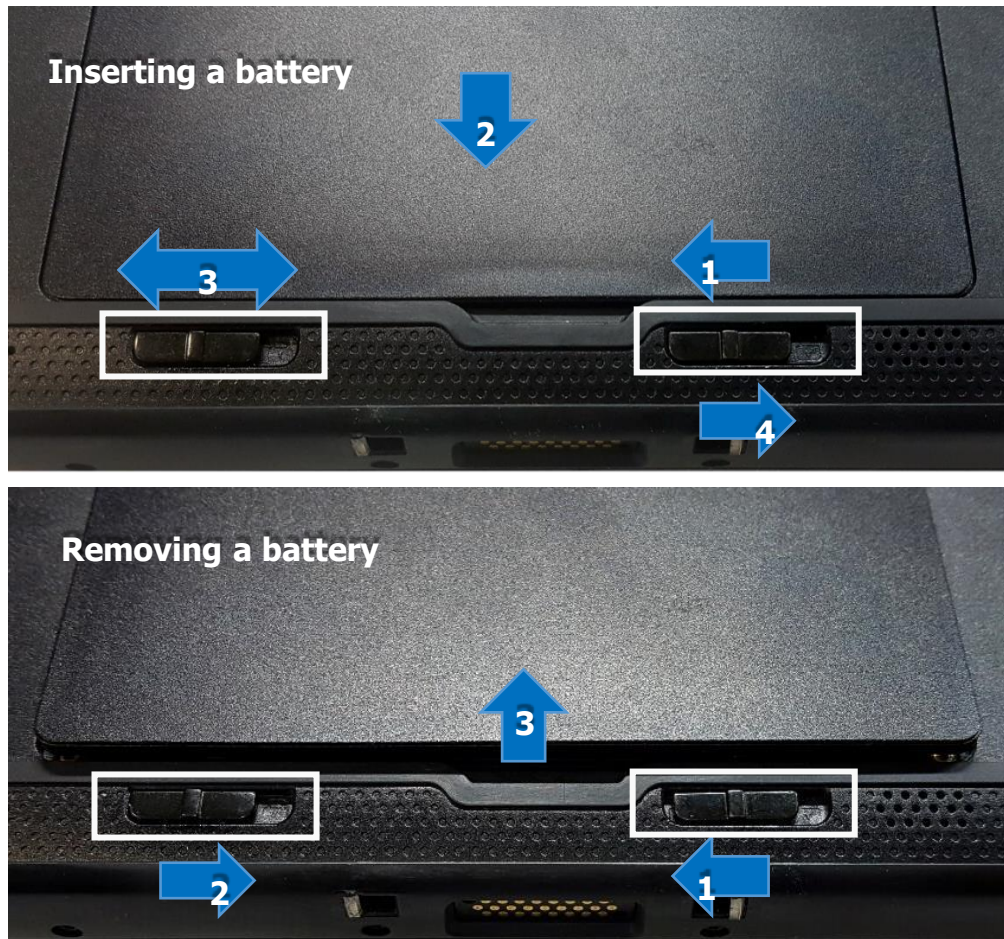
Inserting a SIM Card & a Micro SD Card

- SIM Card(A) : Insert a SIM Card in the SIM Card slot toward the direction of an arrow A.
- Micro SD Card(B) : Insert a Micro SD Card in the SD Card slot toward the direction of an arrow B.

Removing a SIM Card & a Micro SD Card

- SIM Card(A): Push a SIM Card to remove it.
- Micro SD Card(B) : Push a Micro SD Card to remove it.

4 Battery Installation



Inserting a battery

1. Slide the 'right battery locker' in the direction (left) of the arrow 1.
2. Insert the battery in the device.
3. When the battery is inserted completely, the 'left battery locker' will be locked automatically.
4. Slide the 'right battery locker' in the opposite direction (right) of the arrow 1.

Removing a battery

1. Slide the 'right battery locker' in the direction (left) of the arrow 1.
2. Sliding the 'left battery locker' to the direction of the arrow 2, remove the battery.

5 Charging interface

-AC Charging



1. Open the "USB & DC Jack" Cover.

2. Insert the DC Jack in the DJ Jack hole.

3. Battery LED indicates as follows :

- OFF : Not Charging
- Red LED : Charging
- Green LED : Fully Charged

-

- Micro USB Charging



1. Use a USB charger to charge the terminal from a power outlet or connect the cable to a high-power USB port to charge from a host device.

2. Battery LED indicates as follows :

- OFF : Not Charging / Red LED : Charging / Green LED : Fully Charged

※ Adapter Voltage must be 5V and current is 2A or higher recommended.

Charging the battery through a USB port of PC or laptop, or using non recommended output adaptor takes more time.

※ When you use the device for the first time or after not using for long period of time, please charge enough time before using.

Even though you connect the charger, the device may not turn on in the very low voltage state.

Please charge the device for 30 minutes ~ 1 hour first.

The device will turn on automatically and the charge LED will turn on red.

6 How to use functions

-Scanner

2D Imager : A LED aimer should be on the center of barcodes to get a successful read.

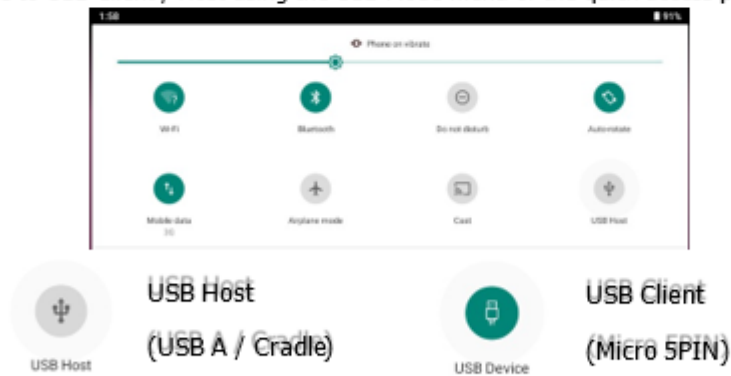


Put your NFC Card closely the "NFC icon" which is on back side of the device to read a NFC card.

NFC reading distance varies depends on the Card type.

Change USB mode

Change to USB Client / Host using the USB Mode menu of the quick access panel.



Caution

G3 cannot use USB Host and USB Client at the same time.

To use the cradle's USB and Ethernet functions, it must be set to USB Host Mode.

7 How to use power

- Power On

Press the Power button to turn on the device.

Android Logo appear on a screen, and the Power LED turns on after a short while.

- Power Off

Press the Power Button until the menu appears and touch Power off.

- SoftReset

Press and hold the power button to perform a Soft Reset and touch Restart.

- Hard Reset

Press and hold the power button for approximately 12 seconds to perform a Hard Reset.

- Factory Reset

Follow the below steps to perform a Factory Reset.

Path : Settings > System > Reset options > Erase all data (factory reset) > RESET TABLET

- Battery Hot Swap

Battery Hot-Swap is available selecting Battery Swap menu under the Power Menu.

When you select the Battery Swap menu, Display will turn off then vibration will turn on within 10 seconds.

Caution

Factory Reset : Erase all data and restore default settings

Note

Not all features are available for all G3.

(Features may vary based on the released option of a G3)